



Big News!!!

MotorcycleRoads.com is now your source for motorcycle Events, Clubs, and Places information. In the few months we've covered Motorcycle Events, we have acquired over 2500 events rallies, bike shows, swap meets, and organized group rides all across the country. You'll also find the most popular motorcycle "places" like motorcycle resorts, motorcycle museums, biker bars, rider hang-outs, restaurants, parks, coffee-shops, etc. And all of this Events, Clubs, and Places information is shown to you in a map view where you can quickly and easily see where everything is located. [Visit our new "Events, Clubs, Places" section today!](#)

New rides keep rollin' in...

[Rt 555 to Elk County and Elk Country \(Pennsylvania\)](#) In Benezette, Elk viewing areas have been established by the state of PA. Follow the signs. Expect to arrive 2 hours before... Route 555 is in northern Pennsylvania with the eastern end starting in Driftwood, PA and going west to Benezette, PA. The road... Starting at Rt 120 in Driftwood, PA, Route 555 runs west 17 miles to Benezette along the Sinnemahoning River.

[Las Vegas to Searchlight to Nipton \(Nevada\)](#) The route starts you out in Las Vegas, the beautiful deserts surrounding Lake Mead as well as takes you through the cooled... US 95 is a great 4 lane open highway. Nipton road is 2 lane highway but in good condition. Las Vegas 95 South towards Laughlin. Searchlight is a small town between Las Vegas & Laughlin. Gas up in Searchlight as last...

[San Angelo State Park Run \(Texas\)](#) The route runs along the side of San Angelo State Park so there is plenty of brush and trees along it. If... This road had a couple of very nice sweeping curves and a couple of little hills. At the beginning of the route... Start at/near the intersection of US 67 and Arden Road and head west on Arden Rd. When you get to Farm to...

[Rt 555 to Elk County and Elk Country \(Pennsylvania\)](#) In Benezette, Elk viewing areas have been established by the state of PA. Follow the signs. Expect to arrive 2 hours before... Route 555 is in northern Pennsylvania with the eastern end starting in Driftwood, PA and going west to Benezette, PA. The road... Starting at Rt 120 in Driftwood, PA, Route 555 runs west 17 miles to Benezette along the Sinnemahoning River.

[Las Vegas to Searchlight to Nipton \(Nevada\)](#) The route starts you out in Las Vegas, the beautiful deserts surrounding Lake Mead as well as takes you through the cooled... US 95 is a great 4 lane open highway. Nipton road is 2 lane highway but in good condition. Las Vegas 95 South towards Laughlin. Searchlight is a small town between Las Vegas & Laughlin. Gas up in Searchlight as last...

[Short Scenic Ride - Hwy 94 \(North Carolina\)](#) The views are of mountains and tree covered roads in many spots. The valley views on some parts of the ride are... I give the quality average due to the start at Boone being pretty rough with some potholes and frost heaves that you... Hwy 194 runs between Boone NC and West Jefferson NC. It is a great ride with many twisties and great views. You...

[Our First Major Ride \(Idaho\)](#) Once you get into the town of Arco until you end in Ketchum/Sun Valley you can see the Sawtooth Mountain Range. The... The

Did you know MotorcycleRoads mobile is now available for Android devices?!

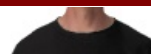
Our smart phone web app has always been available on Apple devices like the iPhone and iPod Touch; but now it's "Android Friendly."

Check out our [MCR Mobile support page](#) for more information.

Update on the MCR Store:

Again, we were surprised by the demand for our T-shirts and have made sure we will not run out this time ... so shop away and help support this website while buying some pretty cool MCR gear.

Below are just a sample of some of the items available at the [New MCR Store](#)



roads were a 5, but I gave the road quality a 4 only because of the areas where there was rock... The road starts out in Blackfoot, ID on route 26. This portion is the least interesting part of the whole ride. You...

[Old Idaho Highway 7 \(Idaho\)](#) The scenery through this area will be in a state of constant evolution. Small communities, farm land, forests, repeat, repeat. Nice, easygoing,... The road is in excellent condition for an old Country Road. There is light farm traffic so be watchful. You will glide... From Lolo Pass, exit Highway 12 at Orofino, Id. Cross the river and turn left at the first road. Sign will say...

[Brandon Mountain Rd & 125 Loop through the Green Mountains \(Vermont\)](#) This is a jog through the mountains. You'll be seeing lots and lots of forest and not too much else. The road is in good shape and has a fair number of fun curves, except for the stretch along 7N. About 7 miles north of Stockbridge, off of Route 100 N, start your route by taking Route 73 west. Follow for about...

[State Route 571 - New Carlisle to Union City \(Ohio\)](#) This route covers mostly rolling and some flat farmland with historic & scenic towns along the way that should be explored. Tipp... The pavement is great with some sections newly paved. The road is a constant mixture of rolling hills, easy curves, and flat... Start your journey in downtown New Carlisle at the intersection of St. Rt. 571 and St Rt. 235 and head west. Key...

[Happy Jack Road \(Wyoming\)](#) At first it's a little boring you go past some wind mills and ranches but about half way in you hit Medicine... no pot holes smooth the entire way if you go in early spring you will have some small gravel to deal with.... Cheyenne, Wy to Larime, Wy from I-25 take exit 10D to missle and head towards Curt Goudy state park and your there....

[Kanuga Rd, Old CCC Rd, Dupont Rd. \(North Carolina\)](#) Peeking view of mountains, mostly trees. Pleasant surprise when rolling around the corner and the vista opens up. Will not likely see... Road is in great shape, just watch for gravel since most roads feeding off of Old CCC road are gravel and it... Head south out of Hendersonville on Kanuga Rd (turns into Crab Creek Rd.); turn left on Old CCC rd, Right on Sky...

[Route 54 \(Pennsylvania\)](#) A great country road trip from Jim Thorpe to Danville, PA. The roads vary, some are brand new some are old but... Lots of twists and turns ups and downs, a fun road to ride, pass some really nice national parks. A great country... Start out in Jim Thorpe, PA and head west on Route 54. Stay on this all the way until it brings you...

[The Northeast Indiana Box \(Indiana\)](#) This route covers Indiana farm and woodland areas. Amish country in the Napanee and Shipshewana area where eating and shopping are good... Mostly good quality 2 lane state roads and US highways with some 4 lane divided highway. Speed limits range from 30 to... 1. Head north on N Railroad St E toward U.S. 24/W Washington St 282 ft 2. Take the 1st right onto...

[Route 114 Through The Kingdom State Forest \(Vermont\)](#) This is a gorgeous area to ride through. It's mostly state forest, though when you get out of the park it's still... This route is mostly big sweeping curves with a few tight ones worked in. There's a fair amount of elevation change as... From Brighton, take Route 114 north through the Kingdom State Forest. At the other end, in Canaan, you'll have options to take...

[102S: Windy, Twisty River Road from Canaan to Northumberland \(Vermont\)](#) This ride took us through lots and lots of farmland. Wide open fields were on either side of us, and immediately to... I need to qualify the "great". For the first few miles south of Canaan, it's not. It's rough - not dangerous in... Start in Canaan and head south on Rt 102 all the way down to Northumberland, VT.

[Frisco to Lake Ray Hubbard \(Texas\)](#) This route has turns and hills along with beautiful homes and landscapes. Roads are average not too exciting mostly low speeds and rural areas with asphalt. This route starts in Frisco, Tx and ends on Interstate 30 just East of Lack Ray Hubbard. Going North East on SRT...

[East Maui Loop \(Hawaii\)](#) It has breath taking ocean and mountain views, there are more than 600 turns and 60 one lane bridges so be careful... The road is paved and in great condition for the majority of this ride, there is about a 12 Miles section of... The trip starts in a small country town called Paia. It travels on route 36/360 which is also known as Hana Highway...

[Perry Lake Loop \(Kansas\)](#) This is a nice little ride around Lake Perry just north or Lawrence, KS. We rode from Perry to Valley Falls then... All of the route is paved but there are some older areas that require some attention. For the most part they are... Start the route by heading north on Co Rd 1029/? Ferguson Rd - Continue to follow Ferguson Rd (19.4 mi)

[Castolon-Santa Elena Canyon Ride \(Texas\)](#) You will see weeping vistas of semi arid dessert, mountains and cliffs, rock formations of a variety of rock types, and at... The road is a well maintained park road with many historical and geographic markers. It twists and turns with a few switchbacks... In Big Bend National Park, begin at the intersection of 118 and Costolon/Santa Elena Canyon. Head south on the Ross Maxwell Scenic...

[Making the Block in South Bossier \(Louisiana\)](#) woods and fields mostly This route is great for a quick nice ride with lots of curves and a few straight aways to open it up... South bossier city LA start corner of hwy 71 and 612. head south, left on hwy 527, down that hwy to corner...



[Long sleeve black shirt with black MCR logo](#)



[Black & gray ringer T-shirt w/basic red MCR logo](#)



[White polo shirt with red MCR logo](#)



[Maroon ball-cap with red embroidered MCR logo](#)



[Metal travel mug with blue MCR logo](#)

To see more items, [visit the New MCR Store.](#)

Quickly and easily tell your friends about these new motorcycle roads!!

Just click on the "forward to a friend" link at the bottom of this newsletter and you can quickly and easily get this information to your motorcycle riding friends.

[Northern Illinois Route 20 \(Illinois\)](#) Mostly country road which goes past a glider business in Hampshire and the Wild West Town (and railway museum) in Union. If... Well maintained roads all the way. A couple of sweeping curves as well. Two lane, low congestion road through the country. Route 20 eastbound will take you all the way to downtown Chicago but west...

[Jr Splendour on Hume Road-CR-635 \(Virginia\)](#) This is a short trip, so you won't see widely varied scenery. That's why I rated it a 3. Although if you're... Curvy and hilly, but narrow. Stick well to your side of the road and you should be okay. Quite a few nice... START: Hume, VA END: US-522, 5 miles north of Flint Hill, VA

[Hartford Scotts Slough Run \(South Dakota\)](#) trees lake curves lota nice curves head north out of hartford on 463rd about 1.5 miles then head west on county hwy 155/scotts ave follow all the curves...



Don't forget to ShareUs to your Facebook friends! See below how easy it is!!

RIVER ROAD GEAR
MOTORCYCLE APPAREL, BOOTS & LUGGAGE
Hoodlum jacket
riverroadgear.com

maps, links to weather, rider comments, and more!!!

Motorcycle Roads & Rides > Routes > United States > New Hampshire

Mt. Washington Auto Road

RIDERS' RATING

Average Rating - This road has been rated by 0 visitors

State: New Hampshire
Date Submitted: December 3, 2011
Submitted by: [RTG](#)
Motorcycle Road Length: 7 Miles

Written Directions
From Conway NH, travel 25.5 Miles North up Rt 16 to the Mt. Washington Auto Road on the left.

Scenery ★★★★★
This is a beautiful road. As soon as you start up the mountain you would like to have it due to an unforgiving drop off. The view is amazing. On a clear day you can see 20 miles in any direction and deep clouds. Bring a jacket, the last time I was here it was 80° at the top. Awesome for the middle of June.

Road Quality ★★★★★
The pavement was pretty good but as you get into the alps the gravel is more of a hard packed sand and gravel. It is excellent. Although the first time I went there, we had to wait for 10 minutes then we had to drive across 50-100' of fairly deep loose sand and gravel. Probably a rarity.

Roadside Amenities ★★★★★
There is a lodge with a cafe at the bottom. There is also a steep Cog Railway that you can opt to take up to the top of the mountain on the top as well.

Additional Info
I thought it was rather expensive to get up. It was \$15 for a ticket but I'd do it again because it is an amazing road. For more info see the link below.

Nickname (optional)

Bike & Breakfast Covered
At Inn of the Ozarks your bike and your breakfast are always covered

AdChoices

PHOTOS/VIDEOS

ADD A PHOTO ADD A VIDEO

To quickly & easily tell a friend or tell the world about a motorcycle ride you would like to try or have tried, use any one of our quick sharing buttons ... you can share this post direct to Facebook, Twitter, Yahoo Pulse, Digg, LinkedIn, email, and more!!! Find the buttons at the bottom of every route description.



Forward this Newsletter to a Friend